







# COMMERCIAL GUIDE

*Today's Provider  
For Tomorrow's Energy*

[WellspringSolar.com](http://WellspringSolar.com)

**Wellspring**  
SOLAR, LLC

# BUSINESS OWNERS ARE MAKING THE SWITCH TO SOLAR, HERE'S WHY!

-  30% Federal Tax Credit
-  MACRS Tax Deduction
-  Excellent ROI
-  Energy Independence






Camp Mack - Milford, IN



Regloplas - Sodus, MI

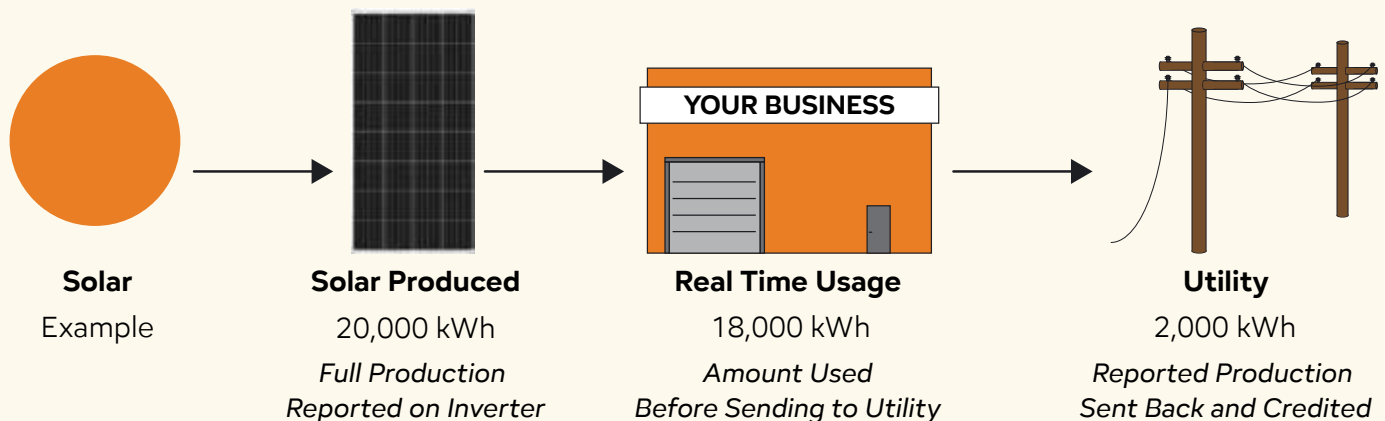
## Maximize Your Commercial Space

-  Place solar on a flat roof with our ballasted rail mounting system that tips panels for optimal sun
-  Car port structures can turn any parking lot into an energy plant
-  Ground mounted solar can be placed on unused land

"We had a dream of greatly reducing or eliminating our monthly power bill at two of our retail locations. After doing some research, we decided to go with Wellspring Soar. The entire process was flawless and completed within our time frame. The staff did an excellent job staying in touch with us throughout the entire process. I can't imagine an easier path to going solar!"

*Shrock Shoppes - Shipshewana, IN*

## Example of Real-time Usage





# TROYER SADDLERY SHIPSHEWANA, IN

# COMMERCIAL SOLAR CASE STUDY



### Financial Overview

System Cost: \$148,500

Total Incentives: \$88,000

**Net Cost: \$60,500**

61% Covered by Tax Credit & Grant

4.7 Year Estimated Payback Period

17.6% Return on Investment

### Troyer Saddlery System Overview

Installed Fall of 2018  
**78 KW** System Size  
**240 - 325W** Panels  
5 - Fronius Inverters

### Initial Estimate of Annual Production

85,931 kWh

### Actual Annual Production

2021 - 105,580 kWh  
2022 - 103,200 kWh  
2023 - 102,080 kWh  
2024 - 104,030 kWh

### Annual Production 4 Year Avg

103,723 kWh

## What Is Your Business Eligible For?

### Commercial Business

**Federal Tax Incentive (ITC):** The federal tax credit is 30% of the total cost of the system. It is a dollar for dollar cancellation of the business's taxable liability.

**Modified Accelerated Cost Recovery Systems (MACRS/Accelerated Depreciation):** MACRS allows businesses to deduct the depreciable basis over five years, reducing tax liability, and accelerating the rate of return on your solar investment.

**USDA Rural Energy for America Program (REAP)** This program provides 25% of the project cost with grant funding to agricultural producers and rural small businesses for renewable energy systems.

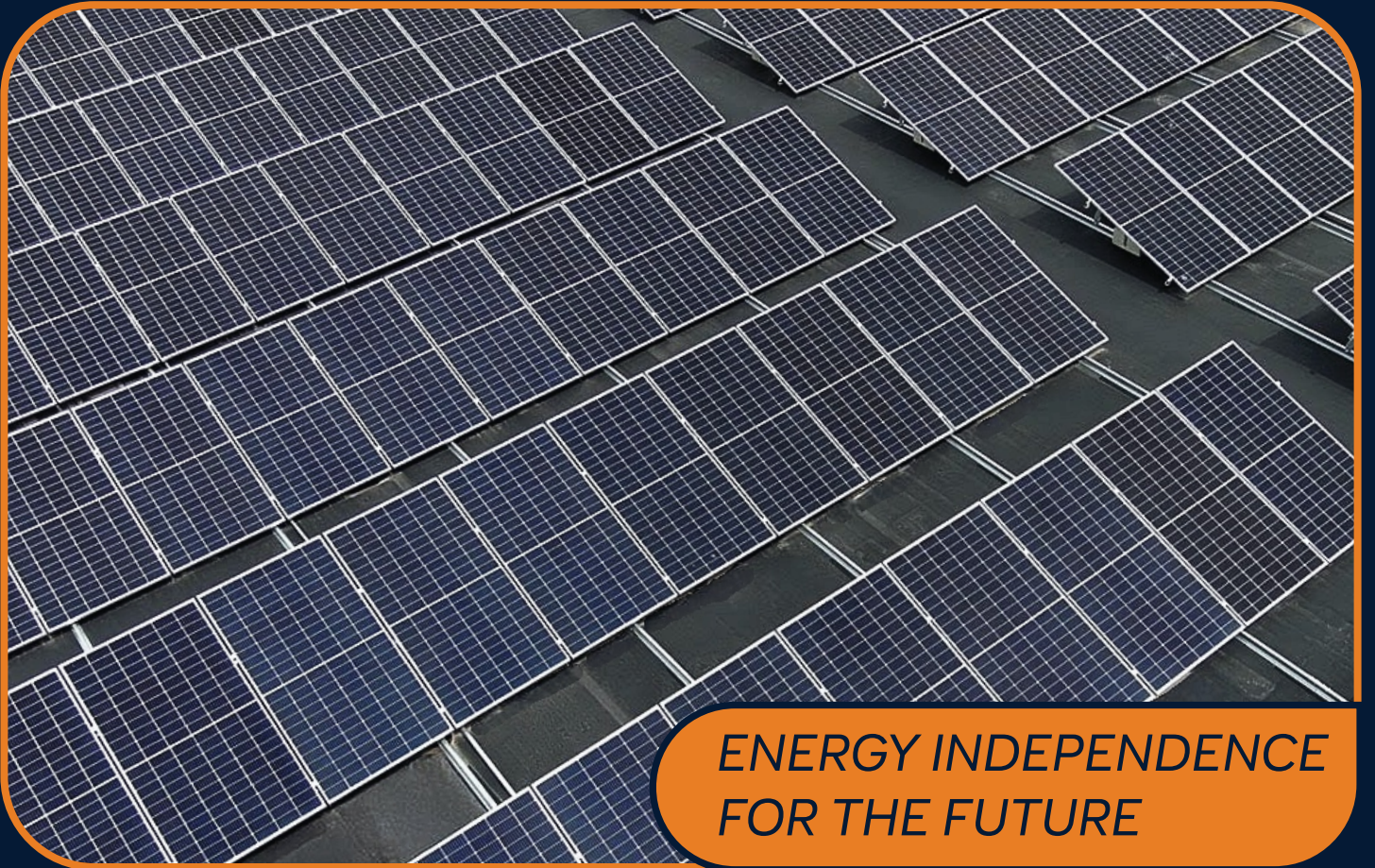
### Non-Profit Organizations

**Direct Pay (Elective Pay):** Under 2022's IRA, direct pay covers 30% of solar costs for eligible systems, even without tax liability.



8th St. Mennonite Church - Goshen, IN





**ENERGY INDEPENDENCE  
FOR THE FUTURE**

**Wellspring**  
SOLAR, LLC

FOLLOW US ON

 @wellspringsolar

 @wellspringsolar

Wellspringsolar.com

*Indiana Corporate Headquarters*  
1085 N 850 W Shippshewana, IN 46565  
260-768-7335

*Illinois Branch Office & Warehouse*  
120 E CR 100 N Arthur, IL 61911  
217-208-2498

*Michigan Partner Location*  
9668 Valley Hwy Vermontville, MI 49096  
269-275-8463



**3 LOCATIONS SERVICING MOST OF  
INDIANA, ILLINOIS AND MICHIGAN**